

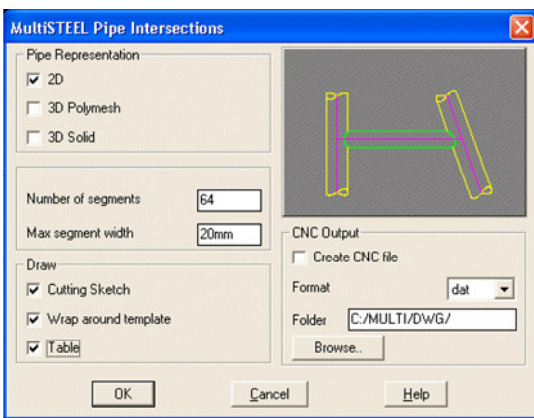
### Overview

MultiSTEEL is more than a productivity tool for AutoCAD. It also provides many industry specific design aids to allow us to solve your design problems, increase your drawing efficiency, and assist right through to the fabrication process.

The accurate drafting and detailing of Tubular/Pipe connections is a typical example. This software extension provides all of the tools necessary to achieve:-

- A high standard of drawing presentation
- Precise geometry in various output formats
- Optional CNC control of fabrication machinery

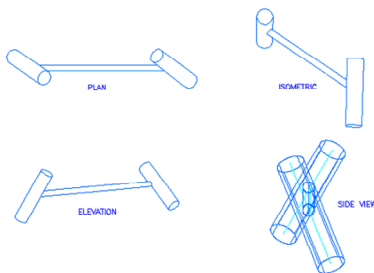
All of this can be achieved in a few minutes with MultiSTEEL.



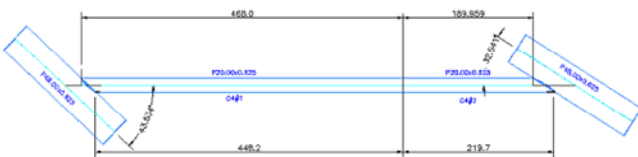
Tubular/Pipe Dialogue makes it easy to select design options



Editing Options include gap, mitre, cutback, and cleanup commands



Any Orientation of Pipe Sections is allowed, in any 3D axis.



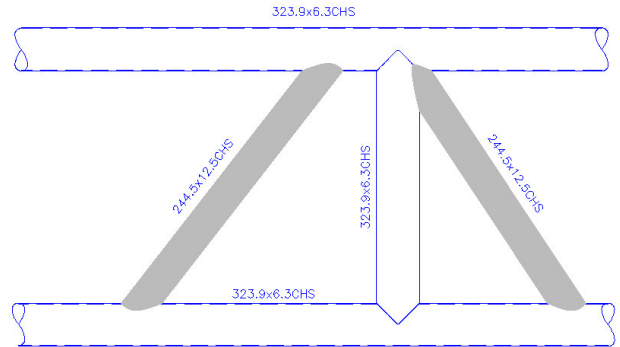
Typical Bracing Sketch

Bracing sketches aid the fabrication and assembly process and can be customised to suit individual requirements.

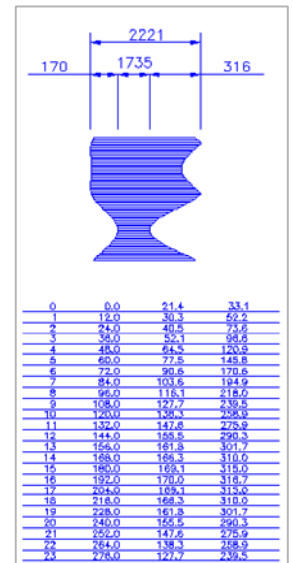
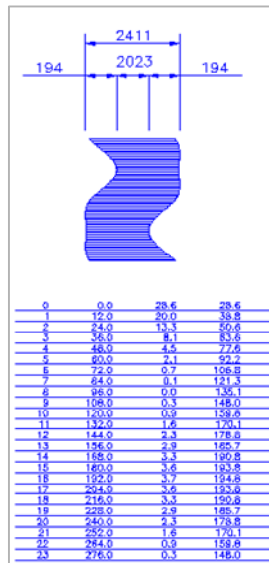
### Output Options

For maximum flexibility, this module can be configured to your exact requirements. It presents a number of options to allow you to achieve the required drawing style, and output of results in the most convenient format.

It is fully integrated with the rest of MultiSTEEL and can be used in conjunction with all normal MultiSUITE commands.



Typical Tubular/Pipe GA showing accurate cutbacks into any complex connection. End Profiles for the shaded pipes are shown below.



Wrap Around Templates and Tables of Offsets

### AutoCAD Platforms Supported

MultiSTEEL is available for the following versions of AutoCAD.

AutoCAD 2000, 2002, 2004, 2005  
Architectural Desktop (ADT)

Stand-alone and Network versions available.  
Only MultiSTEEL provides truly flexible licensing across all AutoCAD platforms.

(All logos and product names are trademarks of their respective owners)